

MAIN FLOOR
2362 SQ. FT.
 10'-0" CEILING HEIGHT



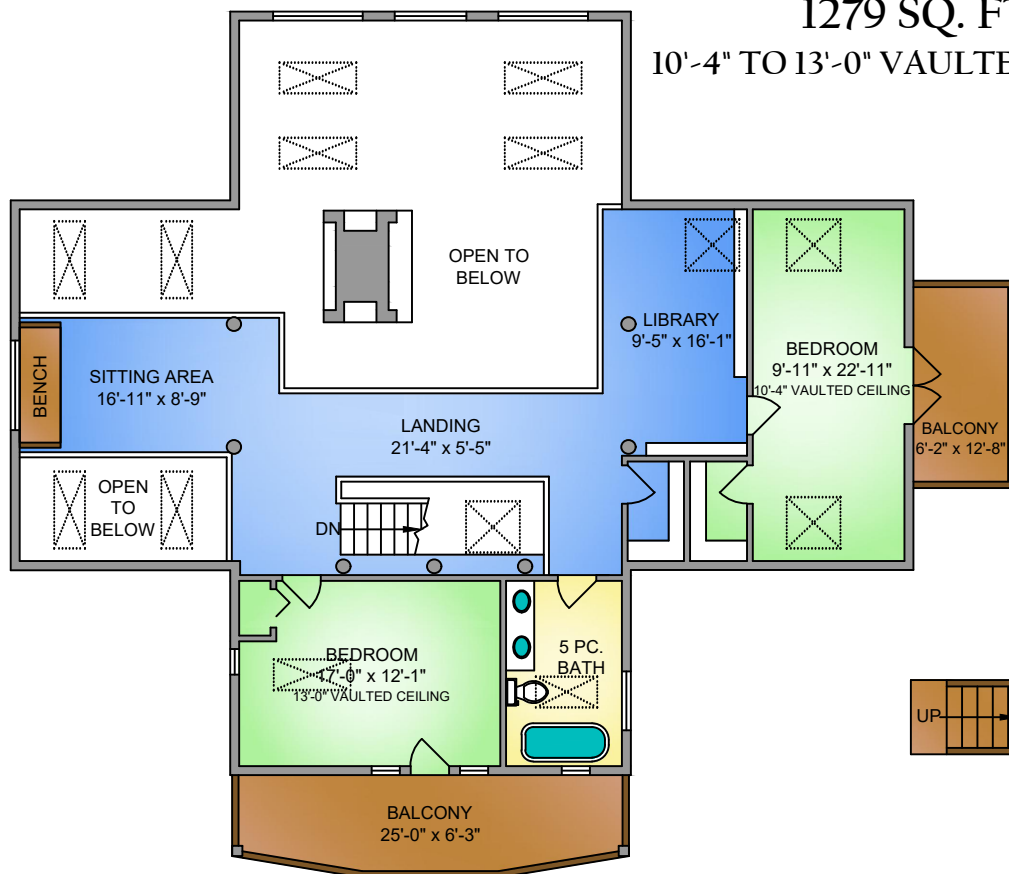
Sotheby's | Canada
 INTERNATIONAL REALTY



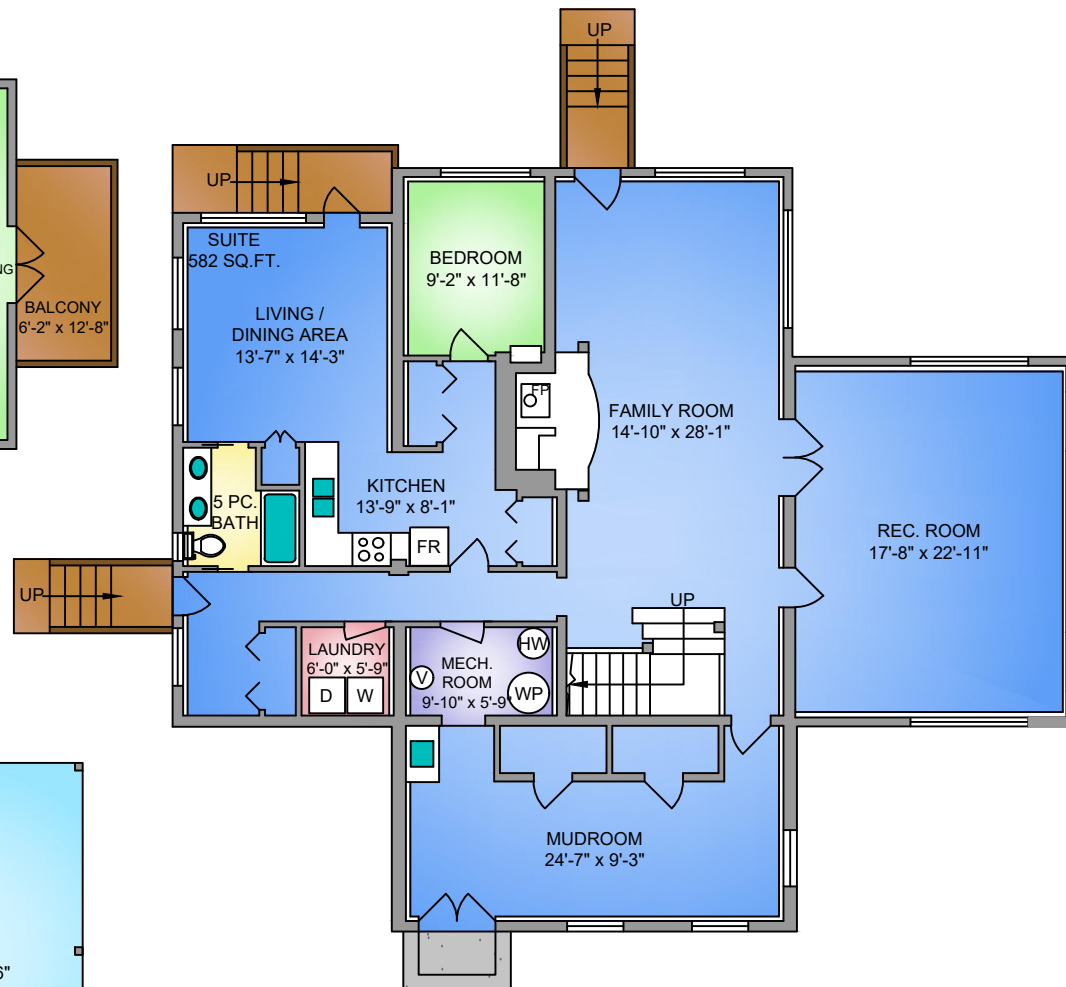
250-884-9753
 matt@propermeasure.com
 www.propermeasure.com

| 250 BECHER BAY ROAD MARCH 9, 2022 PREPARED FOR THE EXCLUSIVE USE OF DEAN INNES PLANS MAY NOT BE 100% ACCURATE, IF CRITICAL BUYER TO VERIFY. | | |
|--|----------------|--------------|
| FLOOR | AREA (SQ. FT.) | |
| | FINISHED | DECK / PORCH |
| MAIN | 2362 | 1462 |
| UPPER | 1279 | 223 |
| LOWER | 2221 | - |
| TOTAL | 5862 | 1685 |

UPPER FLOOR
1279 SQ. FT.
 10'-4" TO 13'-0" VAULTED CEILING



LOWER FLOOR
2221 SQ. FT.
 9'-0" CEILING HEIGHT

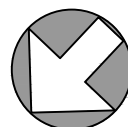


Sotheby's | **Canada**
 INTERNATIONAL REALTY



250-884-9753
 matt@propermeasure.com
 www.propermeasure.com

NORTH



0' 5' 10'
 SCALE

| 250 BECHER BAY ROAD MARCH 9, 2022 PREPARED FOR THE EXCLUSIVE USE OF DEAN INNES PLANS MAY NOT BE 100% ACCURATE, IF CRITICAL BUYER TO VERIFY. | | |
|--|----------------|--------------|
| FLOOR | AREA (SQ. FT.) | |
| | FINISHED | DECK / PORCH |
| MAIN | 2362 | 1462 |
| UPPER | 1279 | 223 |
| LOWER | 2221 | - |
| TOTAL | 5862 | 1685 |